

A. SEATPOST INSERTION

Frame Size	Maximum Insertion
Small	220mm
Medium	220mm
Large	245mm
X-Large	245mm

B. PART NUMBERS - FRONT TRIANGLE

Item	Part No.	Description	Qty.	Consumable
A	BC-538	Headset Kit (9mm Bearing Cap, Split Ring and 5 Inserts)	1	
B	HS-110	Headset Bearing 1-1/2", 36°x45° (sold individually)	2	X
C	HS-185	Crown Race 1-1/2" x 5.2mm (Height)	1	
D	PRO-HT-19-5	MTB Steerer Protector	1	
E	PRO-DT-663	Down Tube Protector	1	X
F	GR-666	Seat Tube Cable Guide	1	
G	UL-FSA-661	Pivot Link Kit See Table D	1	X
H	LK-FSA-681	Linkage Rebuild Kit See Table E	1	X

C. PART NUMBERS - SWINGARM

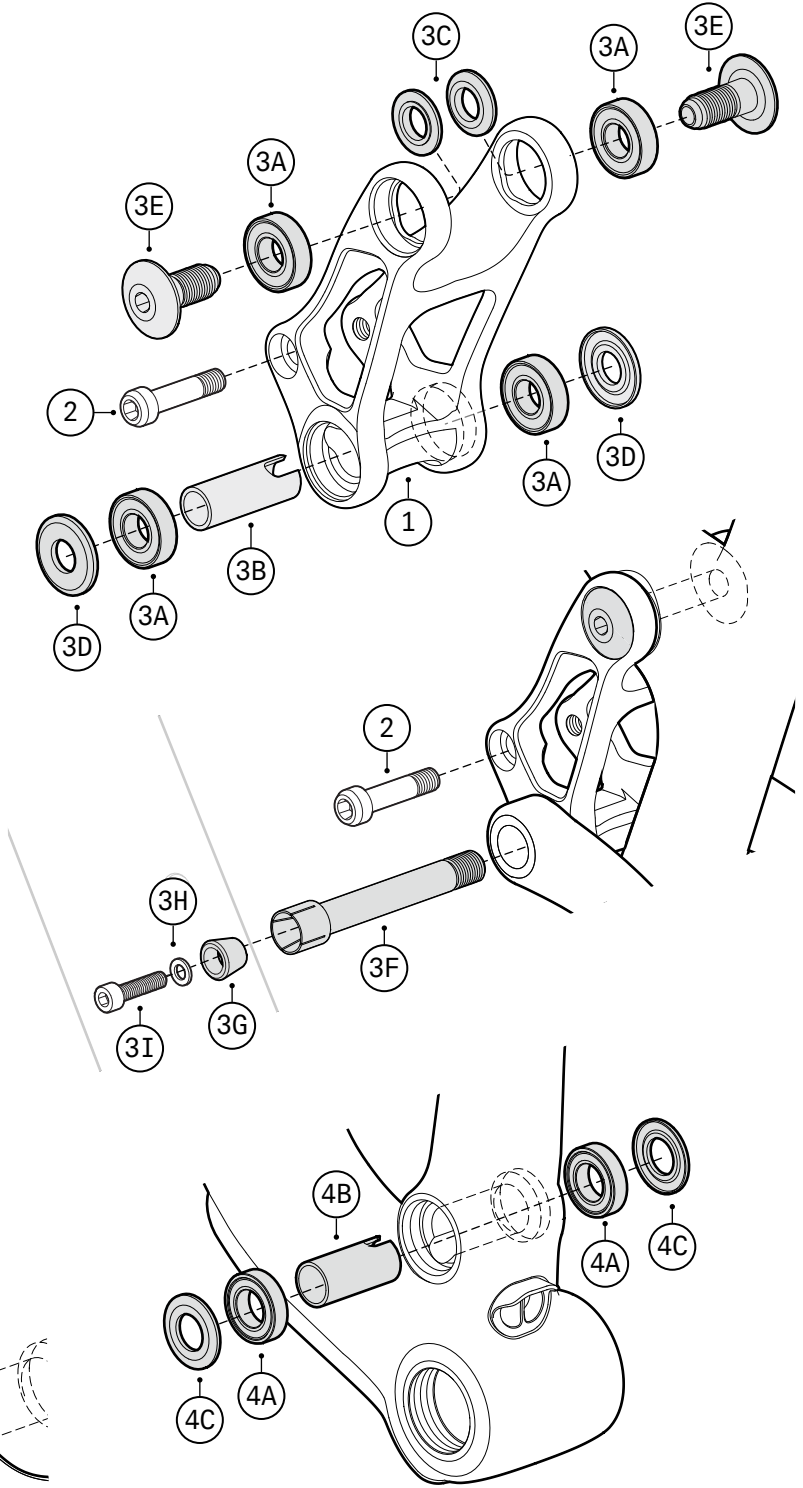
Item	Part No.	Description	Qty.	Consumable
H	LK-FSA-681	Linkage Rebuild Kit See Table E	1	X
I	CG-730	Chain Guide	1	
J	PRO-CS-664	Swingarm Protector Kit	1	
K	GR-576	6mm Blanking Plug	1	
L	00-7918-089-000	SRAM UDH	1	X
M	QRI-FSA-694	Brake Plate	1	
N	QRA-MTB-R	Cervelo Rear MTB Thru Axle w/ Removable Handle	1	
O	QRA-MTB-R-HNDL	Removable Handle For Cervelo MTB Thru Axle	1	

D. PIVOT LINK KIT ( UL-FSA-661 )\*

Item	Description	Qty.
1	Alloy pivot link	1
2	Rear shock fixing screw (M8 x 35)	1
3A	Pivot link bearings (6900 2RS Max)	4
3B	Pivot axle split spacer	1

E. LINKAGE REBUILD KIT ( LK-FSA-681 )\*

Item	Description	Qty.
2	Rear shock fixing screw (M8 x 35)	2
3A	Pivot link bearings (6900 2RS Max)	4
3B	Pivot axle split spacer	1
3C	Dust shield (upper) 19mm	2
3D	Dust shield (lower) 24mm	2
3E	Upper pivot fixing screw	2
3F	Pivot link collet bolt	1
3G	Pivot link tapered washer	1
3H	M5 washer	1
3I	M5 fixing screw	1
4A	Main pivot bearings (6902 2RS Max)	2
4B	Main pivot axle split spacer	1
4C	Dust shield 30mm	2
4D	Main pivot collet bolt	1
4E	Main pivot tapered washer	1
4F	M6 washer	1
4G	M6 fixing screw	1



\*Consult ZFS-5 Retailer Manual for grease and Loctite™ application notes.

F. FRAME SPECIFICATIONS

Item	Description
Upper Headset Bearing Dimension	1-1/2", 40 x 51.8 x 7.5, 36°x45°
Lower Headset Bearing Dimension	1-1/2", 40 x 51.8 x 7.5, 36°x45°
Seatpost Diameter	30.9mm Round
Seatpost Clamp Diameter	35.5
Rear Derailleur Hanger	SRAM UDH
Rear Thru-Axle Dimensions	M12x1x180mm (12x148mm Boost)
Maximum Chainring Size (1x Only)	36t
Maximum Tire Width (Actual)	61mm (2.4") with 6mm clearance*
Brake Mount Type	Post Mount

\*Tire measurements shall be taken at the widest point of the tire when installed and inflated. 6mm of distance is required between the tire and any frame or fork element.

G. SUGGESTED PREVENTATIVE MAINTENANCE SCHEDULE

Item	Every Ride	25 Hours	50 Hours	75 Hours	100 Hours (Yearly)
Check bicycle for visual damage and function of all controls	X				
Check for firmware updates to electronics			X		X
Front suspension- wiper seals, oil bath service			X*		
Front suspension full service					X
Rear suspension- air can service			X		
Rear suspension- full service					X
Suspension linkage inspection- test for play in bearings, creaking, knocking	X				
Suspension linkage- check torque on linkage hardware		X	X	X	X
Suspension linkage service- disassemble, replace bearings and threaded hardware, reinstall with proper grease and loctite					X
Check brake function	X				
Check brake pad and rotor thickness, replace at manufacturer's recommended wear point		X	X	X	X

\* Fox wiper seal and oil bath service to be done at 30 hours

Item	Every Ride	25 Hours	50 Hours	75 Hours	100 Hours (Yearly)
Bleed hydraulic brake system					X
Remove drivetrain, clean, degrease, reinstall with appropriate grease and lubricant					X
Inspect chain, cassette, and chainring for wear. Replace as per manufacturer's specification		X	X	X	X
Remove bottom bracket, inspect for wear, reinstall with proper grease and lubricant					X
Visual external inspection of shift housing for wear, frayed, or cracked pieces	X				
Full inspection of shift cable and housing for normal wear and tear. Replace entire cable system when exhibiting signs of exploded housing ends, bent or frayed shift cables			X		X
Service headset- remove bearings, inspect for wear, replace bearings if worn, clean interface, and reinstall with appropriate grease					X
Clean and reapply grease/carbon paste/thread locker to stem and seatpost hardware as per manufacturer's recommendation					X
Inspect spoke tension and wheel true- adjust as needed	X		X		X
Inspect wheel bearings and adjust/replace as needed			X		X
Check tire sealant level and replace if dry		X	X	X	X
Inspect tire casing, knob, and tread condition and replace when worn	X		X		X

RECOMMENDATIONS

1. It is Cervélo's strong recommendation to batch overlapping services together in a comprehensive way (e.g. service/ replace headset bearings at time of brake bleeds, etc.)
2. In case of a conflict between the service intervals given in this tech reference sheet and those provided by a component manufacturer, consult with your Cervélo Retailer, Cervélo Customer Support, or the original component manufacturer for clarification.

## H. TORQUE SPECIFICATIONS

Component	Torque(N·m)	Notes
<b>Frame</b>		
Bottom Bracket- threaded- BSA 73	50 N·m	Clean & grease the BB shell threads inside the frame. Grease the outside threads of the BB cups. Thread both sides of the BB cups into the frame- noting that the right side cup is reverse threaded. Using a torque wrench and the appropriate adaptor, tighten both sides to the specified torque until they are flush with the frame.
Brake plate fixing screw	3 N·m	Apply Loctite 243 (or equivalent) to bolt threads
Rear derailleur fixing nut (SRAM UDH)	25 N·m	Apply grease only to the thru axle threads. Do not apply grease the UDH hanger or fixing nut.
Water bottle cage fixing screws	2 to 3 N·m	Lightly grease the fixing screws.
<b>Seatpost Clamp (frame to seatpost)</b>		
Round collar	4 N·m	Use carbon assembly compound between a carbon seatpost and the frame.
<b>Saddle (seatpost head bolts) – SP29 Carbon</b>		
2 bolt head	8 to 9 N·m	Apply Loctite 243 (or equivalent) to the fixing screw threads
<b>Wheels</b>		
Cervélo aero thru-axle / Cervélo aero thru-axle with removable handle	12 to 15 N·m	Requires the use of a 6 mm allen key type wrench or removable handle.
<b>Suspension</b>		
Shock fixing screws (upper and lower)	20 N·m	Apply grease to the fixing screw threads
Upper pivot link fixing screws	15.8 N·m	Apply Loctite 243 (or equivalent) to the fixing screw threads
Pivot link collet axle	13.6 N·m	Apply Loctite 243 (or equivalent) to the axle threads. Apply grease to the axle shaft.
Pivot link collet expansion screw	5.6 N·m	Apply Loctite 243 (or equivalent) to the screw threads
Main pivot collet axle	20.3 N·m	Apply Loctite 243 (or equivalent) to the axle threads. Apply grease to the axle shaft.
Main pivot collet expansion screw	9 N·m	Apply Loctite 243 (or equivalent) to the screw threads