

A. FRAME SPECIFICATIONS

Item	Description
Upper Headset Bearing	1-1/4", 34 x 46.8 x 7, 45°x45°
Lower Headset Bearing	1-1/2", 40 x 51.8 x 7.5, 36°x45°
Rear Derailleur Hanger	DRH-WMN112 (Standard Derailleur) DRH-SDM (Shimano Direct Mount Derailleur)
Rear Thru-Axle Dimensions	170.5mm Length, M12 x 1.75, for 142 x 12 spacing
Front Thru-Axle Dimensions	127mm Length, M12 x 1.5, for 100 x 12 spacing
Maximum Chainring Size 1x	52T
Maximum Chainring Size 2x	55T
Maximum Tire Width (Actual)	34mm with 4mm clearance*

A. FRAME SPECIFICATIONS (CONT.)

Item	Description
Front Brake Mount Type	Flat mount fork
Rear Brake Mount Type	Flat mount
Rear Brake - Chainstay Height	25mm
Brake Rotor Min/Max	140mm/160mm
Bottom Bracket Type/Width	T47 BBRight (T47A) Left cup: Inboard T47, Right cup: outboard T47.
Fork Offset Size 48cm	57.5mm
Fork Offset Size 51cm	51.5mm
Fork Offset Size 54-61cm	45.5mm
Fork Steerer Type	Cervélo D-Shaped

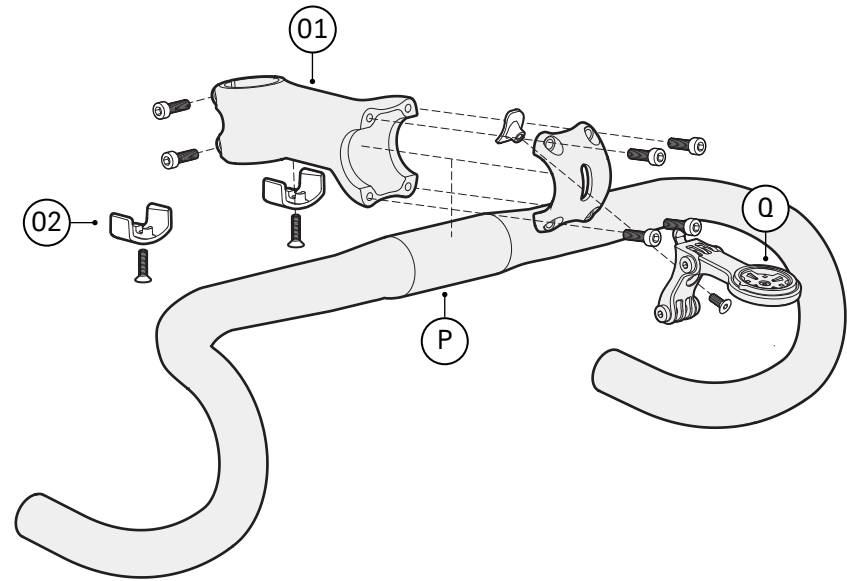
*Tire measurements shall be taken at the widest point of the tire when installed and inflated. 4mm of distance is required between the tire and any frame or fork element.

B. PART NUMBERS

Item	Part No.	Description	Qty.	Consumable
A	FKI-CL005-517A	D-Steerer Preload Compression Plug	1	
B1	PL-601	Bearing Cover Plug	1	X
B2	BC-STA	STA Headset Bearing Cap Kit (30mm & 14mm)	1	
B3	BC-STA-644	STA Low Bearing Cover Kit (8mm) Compatible with hydraulic brake systems and electronic shifting systems ONLY	1	
B4	SR-STA	STA Headset Split Ring	1	
C1	HS-082	FSA Headset Bearing (Upper) 1-1/4 45° X 45°	1	X
C2	HS-110	FSA Headset Bearing (Lower) 1-1/2 36° x 45°	1	X
D	CBG-DBH	Disc Brake Hose Guide	1	
E	QRI-THD	Threaded Fork Insert w/Fixing Screw	1	
F1	QRA-AERO2-HNDL	Removable Handle For Cervelo Aero Thru-Axle	1	
F2	QRA-AERO2-F	Cervelo Front Aero Thru-Axle w/ Removable Handle	1	
F3	QRA-AERO2-R	Cervelo Rear Aero Thru-Axle w/ Removable Handle	1	
G	GR-BB-140	BB Blanking Plug R5	1	
H	GR-576	6mm Blanking Plug	1	
I	EW-GM300-S	Shimano SD300 Grommet For 6mm Hole	1	
J1	FDM-0E0	Front Der. Mount w/Fixing Screws	1	
J2	FDM-CVR	FDM Blanking Plate	1	
K	PRO-CS-ASP	FM137 CS Protector	1	X
L1	DRH-WMN112	Rear Der. Hanger w/ Mounting Nut	1	X
L2	DRH-SDM	Shimano Direct Mount RDH w/ Mounting Nut	1	X
M	SPC-STA	Seat Post Clamp Assembly STA	1	
N	SPCC-STA	STA Seat Post Clamp Cover	1	

B. PART NUMBERS (CONT.)

Item	Part No.	Description	Qty.
O1	See Table C	ST36 Stem	1
O2	MT-597	ST36 Cable Guide	1
P	See Table D	AB07 Alloy Handlebar	1
Q	MT-LM-F-004	Accessory Mount Kit- Front	1
R	BTM-596	SP027 Battery Holder	1
S1	SP-SP27-15MM	SP027 15mm Offset Aero Seatpost	1
S2	SP-SP27-ZERO	SP027 0mm Offset Aero Seatpost	1
T	MT-LM-R-003	Accessory Mount Kit - Rear	1

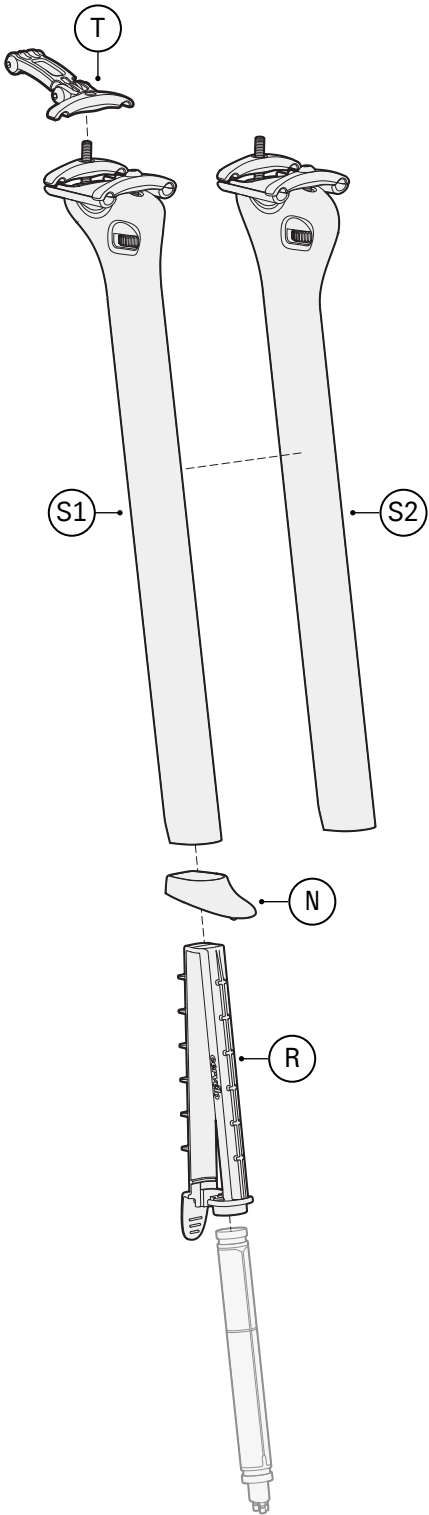


C. ST36 STEM

Part No.	Description
ST-A036-70	ST36 Stem 70mm
ST-A036-80	ST36 Stem 80mm
ST-A036-90	ST36 Stem 90mm
ST-A036-100	ST36 Stem 100mm
ST-A036-110	ST36 Stem 110mm
ST-A036-120	ST36 Stem 120mm
ST-A036-130	ST36 Stem 130mm

D. AB07 HANDLEBAR

Part No.	Description
HB-AB07-38	AB07 Aluminum Handlebar 38cm
HB-AB07-40	AB07 Aluminum Handlebar 40cm
HB-AB07-42	AB07 Aluminum Handlebar 42cm
HB-AB07-44	AB07 Aluminum Handlebar 44cm



E. SUGGESTED PREVENTATIVE MAINTENANCE SCHEDULE

Item	Every Ride	300 Miles	600 Miles	900 Miles	1200 Miles (Yearly)
Check bicycle for visual damage and function of all controls	X				
Check for firmware updates to electronics			X		X
Check brake function	X				
Check brake pad and rotor thickness, replace at manufacturer's recommended wear point			X	X	X
Bleed hydraulic brake system					X
Remove drivetrain, clean, degrease, reinstall with appropriate grease and lubricant					X
Inspect chain, cassette, and chainring for wear. Replace as per manufacturer's specification		X	X	X	X
Remove bottom bracket, inspect for wear, clean threads, and reinstall with proper grease and lubricant					X
Visual external inspection of mechanical shift housing and brake hose for wear, frayed, or cracked pieces	X				
Full inspection of mechanical shift cable and housing for normal wear and tear. Replace entire cable system when exhibiting signs of exploded housing ends, bent or frayed shift cables			X		X
Service headset- remove bearings, inspect for wear, replace bearings if worn, clean interface, and reinstall with appropriate grease					X
Clean and reapply grease/carbon paste/thread locker to stem, seatpost, and seatpost wedge hardware as per manufacturer's recommendation					X
Inspect spoke tension and wheel true- adjust as needed			X		X
Inspect wheel bearings and adjust/replace as needed			X		X
Check tire sealant level and replace if dry		X	X	X	X
Inspect tire casing and tread condition, replace when worn			X		X

RECOMMENDATIONS

1. It is Cervélo's strong recommendation to batch overlapping services together in a comprehensive way (e.g. service/replace headset bearings at time of brake bleeds, etc.)
2. In case of a conflict between the service intervals given in this tech reference sheet and those provided by a component manufacturer, consult with your Cervélo Retailer, Cervélo Customer Service, or the original component manufacturer for clarification.