

A. FRAME SPECIFICATIONS

Item	Description
Upper Headset Bearing	1-1/8", 30.2 x 41 x 6.5, 36° x 45°
Lower Headset Bearing	1-1/4", 34 x 46.8 x 7, 45° x 45°
Rear Derailleur Hanger	Cervelo DRH-WMN112 (Standard Derailleur)
	Cervelo DRH-SDM (Shimano Direct Mount Derailleur)
Rear Thru-Axle Dimensions	170.5mm Length, M12 x 1.75, 12 mm Thread Length, for 142 x 12 spacing
Front Thru-Axle Dimensions	127 mm Length, M12 x 1.5, 11 mm Thread Length, for 100 x 12 spacing
Maximum Chainring Size 1x	68t with a 45 mm chainline
Maximum Chainring Size 2x	57t with a 44.5 mm or 45 mm chainline

A. FRAME SPECIFICATIONS

Item	Description
Maximum Tire Width (Actual)	34 mm with 4 mm clearance*
Front Brake Mount Type	Flat mount fork
Rear Brake Mount Type	Flat mount
Rear Brake - Chainstay Height	30 mm
Brake Rotor Min/Max	140 mm/160 mm
Bottom Bracket Type/Width	BBRight
Fork Offset Size 48 cm	52 mm
Fork Offset Size 51-61 cm	43 mm
Fork Steerer Type	FK148 Tension Rod System

* Tire measurements shall be taken at the widest point of the tire when it is installed on the rim and inflated. 4 mm of distance is required between the tire and any frame or fork element.

B. PART NUMBERS

Item	Part No.	Description	Qty.	Consumable
A1	see Table C	FK148 Tension Rod Kit (Size Specific)	1	
A2	HS-581	S5F FK Tension Rod Bumper	1	X
A3	FKI-GPSP-758	P5F Fork Gap Spacer Kit	1	
B1	HS-054	FSA Headset Bearing 1-1/8" 36° x 45°	1	X
B2	HS-082	FSA Headset Bearing 1-1/4" 45° x 45°	1	X
C1	QRA-AERO2-F	Cervélo Front Aero Thru-Axle with Removable Handle	1	
C2	QRA-AERO2-HNDL	Removable Handle for Cervélo Aero Thru-Axle	1	
C3	QRA-AERO2-R	Cervélo Rear Aero Thru-Axle with Removable Handle	1	
D	GR-BB-140	BB Blanking Plug R5	1	
E	GR-576	6 mm Blanking Plug	2	
F	EW-GM300-S	Shimano SD300 Grommet for 6 mm Hole	2	
G1	FDM-0E0	Front Derailleur Mount with Fixing Screws	1	
G2	FDM-CVR	Front Derailleur Mount Blanking Plate	1	
H	PRO-CS-508	Chainstay Protector 508	1	
I1	DRH-WMN112	Rear Derailleur Hanger with Fixing Nut	1	X
I2	DRH-SDM	Shimano Direct Mount RDH with Fixing Nut	1	X
J1	SPCC-759	Seat Post Clamp Cover 759	1	
J2	SPC-0E0P	Seat Post Clamp Assembly P Series	1	
K	SB-SB03-TT	SB03TopTube Storage Box	1	
L	CVR-WB	Bottle Boss Cover Plate	2	
M	WB-WB01	Aero Water Bottle and Cage	1	X

C. TENSION ROD KIT

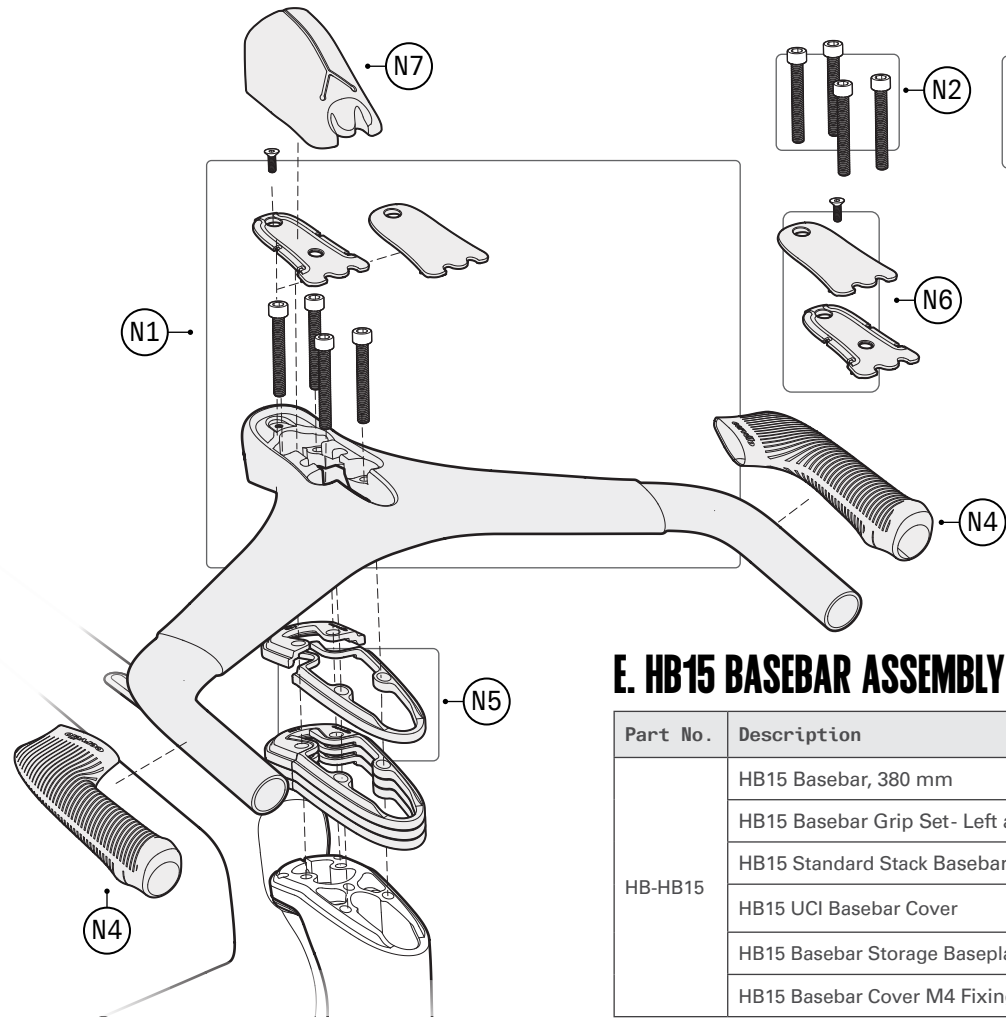
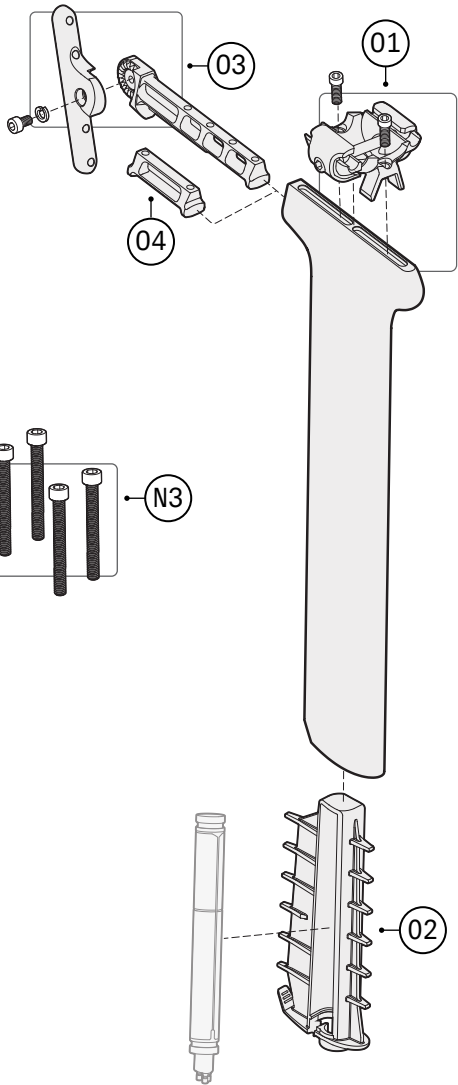
Part No.	Description
HTR-764	P5F FK Tension Rod with Bumper and Preload Cone for 48 cm frame
HTR-765	P5F FK Tension Rod with Bumper and Preload Cone for 51 cm frame
HTR-766	P5F FK Tension Rod with Bumper and Preload Cone for 54 cm frame
HTR-767	P5F FK Tension Rod with Bumper and Preload Cone for 56 cm frame
HTR-768	P5F FK Tension Rod with Bumper and Preload Cone for 58 cm frame
HTR-769	P5F FK Tension Rod with Bumper and Preload Cone for 61 cm frame

D. PART NUMBERS - BASEBAR AND SEATPOST

Item	Part No.	Description	Qty.	Consumable
N1	HB-HB15	see Table E	1	
N2*	HBP-045	HB15 Standard Stack Mounting Hardware Kit (45mm Fixing Screws x4)	1	
N3	HBP-065	HB15 Extra Stack Mounting Hardware Kit (65mm Fixing Screws x4)	1	
N4*	HBP-GRIPS	HB15 Basebar Grip Set- Left and Right	1	X
N5*	HSS-P5F-KT	P5F Headset Spacer Kit	1	
N6*	HBP-HB15-761	HB15 UCI Basebar Cover and Storage Baseplate with M4 Fixing Screw	1	
N7	SB-HB15-760	HB15 Basebar Storage	1	
O1**	SP-SP23-L-B	SP23 Long Carbon Seatpost with Head	1	
O2	MT-BINT-SP	P Series Seatpost Battery Mount	1	
O3	MT-WB-SP	Seatpost Water Bottle Mount	1	
O4	SPS-SP2123	Seatpost Head Mounting Slug	1	

* Available separately or as part of the HB15 Basebar Assembly Kit.

** Included seat post head assembly is for 7x10 carbon railed saddles only. For alloy railed saddles, a 7x7 clamp compatible with the SP-SP23-L-B is available from Ritchey Design.

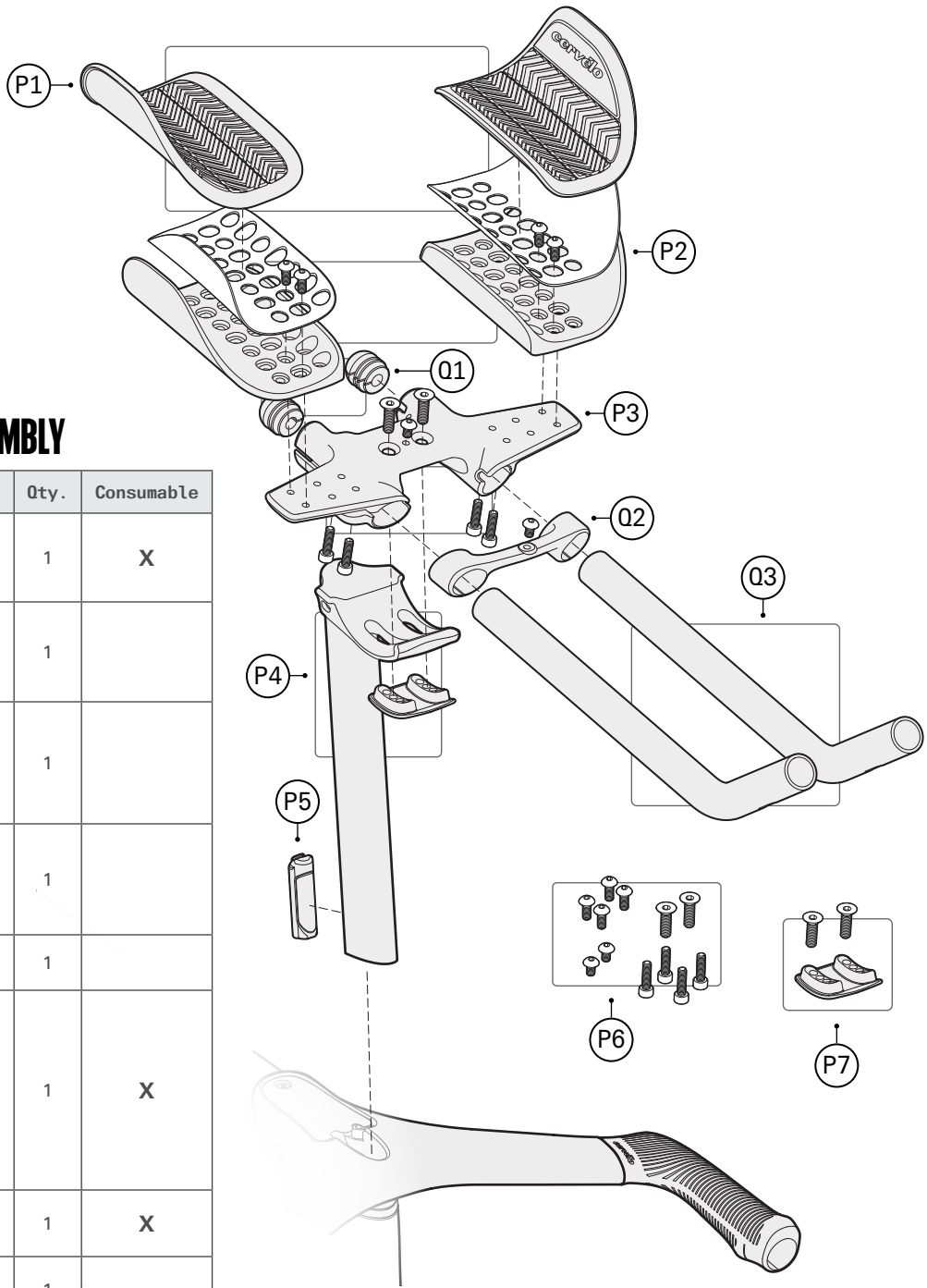


E. HB15 BASEBAR ASSEMBLY

Part No.	Description	Qty.
HB-HB15	HB15 Basebar, 380 mm	1
	HB15 Basebar Grip Set- Left and Right	1
	HB15 Standard Stack Basebar Fixing Screws (45 mm)	4
	HB15 UCI Basebar Cover	1
	HB15 Basebar Storage Baseplate	1
	HB15 Basebar Cover M4 Fixing Screw	1

F. PART NUMBERS - RISER BAR ASSEMBLY

Item	Part No.	Description	Qty.	Consumable
P1	HBP-EX14-PADS	EX14 Handlebar Pad Set with with Adhesive Velcro	1	X
P2	HBP-EX14-RESTS	EX14 Pad Rests with Fixing Screws x4	1	
P3	HBP-EX10-PADMT	EX10 Pad Mount with Extension Fixing Screws x4 and Bottle Cage Fixing Screws x2	1	
P4	HBP-EX14-RISER	EX14 Riser Post Assembly with Tilt Adjust Plate and Fixing Screws x2	1	
P5	HBP-PCLP	P5 Riser Post Clamp	1	
P6	HBP-EX14-BTKT	EX14 Riser Assembly Bolt Kit (Tilt Adjustment Fixing Screws x2, Pad Mounting Fixing Screws x 2, Bottle Cage Fixing Screws x2, Pad Mount Extension Fixing Screws x4	1	X
P7	HBP-EX14-ADJPL	EX14Tilt Adjust Plate with Fixing screws x2	1	X
Q1	HBPEX14-PLUG	EX14 Extension Plug Kit	1	
Q2	HBPEX14-BOTMT	EX14 Bottle Mount with Bottle Cage Fixing Screws x2	1	
Q3	HBP-EX14-EXT35D	EX14 Extensions, 35 Degree Bend with Extension Plug Kit	1	





Frame Code: FM148
Serial Number Code: SN148
Frame Sizes (cm): 48/51/54/56/58/61

2024

G. SUGGESTED PREVENTATIVE MAINTENANCE SCHEDULE

Item	Every Ride	300 Miles	600 Miles	900 Miles	1200 Miles (Yearly)
Check bicycle for visual damage and function of all controls	X				
Check for firmware updates to electronics			X		X
Check brake function	X				
Check brake pad and rotor thickness, replace at manufacturer's recommended wear point			X	X	X
Bleed hydraulic brake system					X
Remove drivetrain, clean, degrease, reinstall with appropriate grease and lubricant					X
Inspect chain, cassette, and chainring for wear. Replace as per manufacturer's specification		X	X	X	X
Remove bottom bracket, inspect for wear, clean threads, and reinstall with proper grease and lubricant					X
Full inspection of brake hose and electronic shift wires wear, damage, kinked sections. Replace any hoses or wires exhibiting external signs of wear.					X
Service headset- remove bearings, inspect for wear, replace bearings if worn, clean interface, and reinstall with appropriate grease					X
Remove tension rod and clean. Inspect tension rod bumper and replace if showing any signs of wear. Apply fresh grease and reinstall					X
Clean and reapply grease/carbon paste/thread locker to stem, seatpost, and seatpost wedge hardware as per manufacturer's recommendation					X
Inspect spoke tension and wheel true- adjust as needed			X		X
Inspect wheel bearings and adjust/replace as needed			X		X
Check tire sealant level and replace if dry		X	X	X	X
Inspect tire casing and tread condition and replace when worn			X		X

RECOMMENDATIONS

1. It is Cervélo's strong recommendation to batch overlapping services together in a comprehensive way (e.g. service/replace headset bearings at time of brake bleeds, etc.)
2. In case of a conflict between the service intervals given in this tech reference sheet and those provided by a component manufacturer, consult with your Cervélo Retailer, Cervélo Customer Service, or the original component manufacturer for clarification.